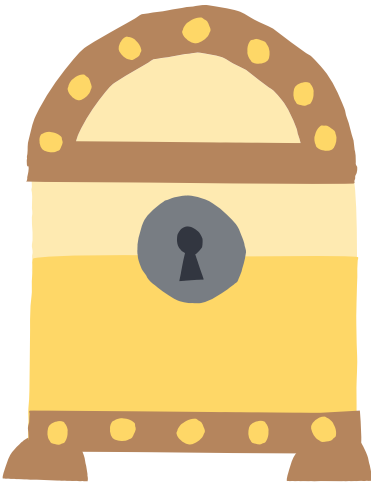


LOGIC IN VENICE

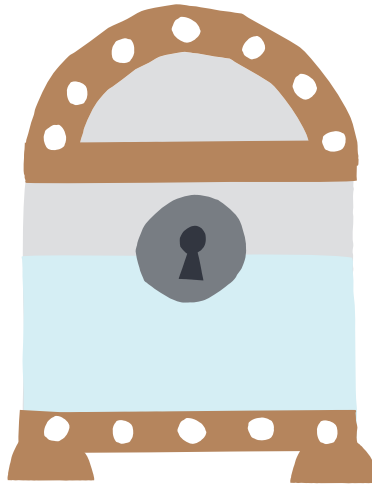
Portia has many suitors. She must marry the suitor who guesses correctly, out of three chests, the one that contains her portrait. Each chest is labeled with a statement. One, and only one of the three statements is true.

The golden chest reads: "The portrait is in this chest." The silver chest reads: "The portrait is not in this chest." And the lead chest reads: "The portrait is not in the golden chest." Could you guess which chest contains the portrait?

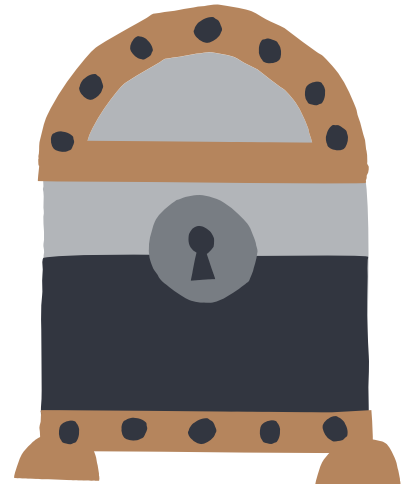
This riddle was invented by Raymond Smullyan, a mathematician who specializes in logic who was also a magician, pianist, monologue ... He was inspired by Shakespeare's *The Merchant of Venice*.



The portrait is in this chest.



The portrait is not in this chest.



The portrait is not in the golden chest.